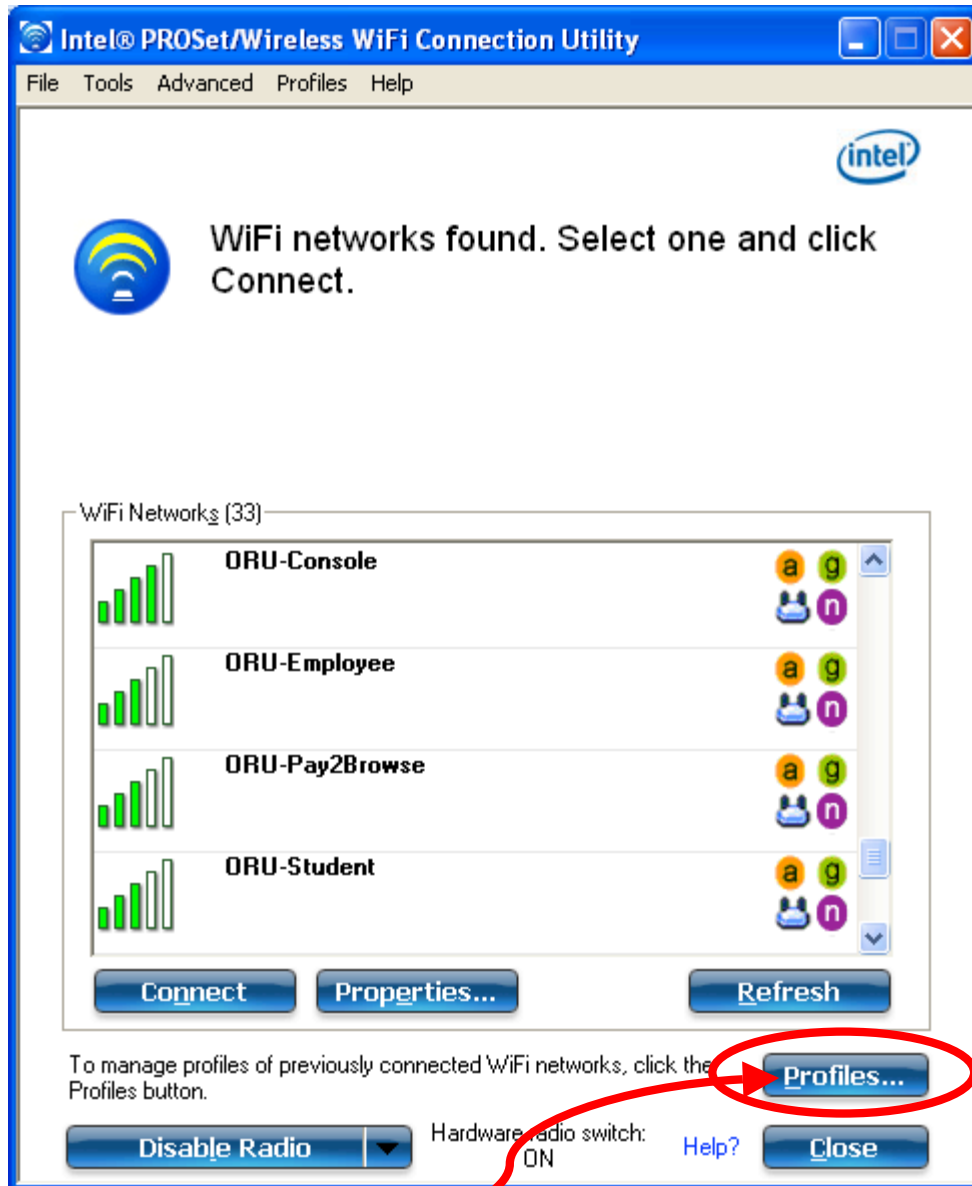




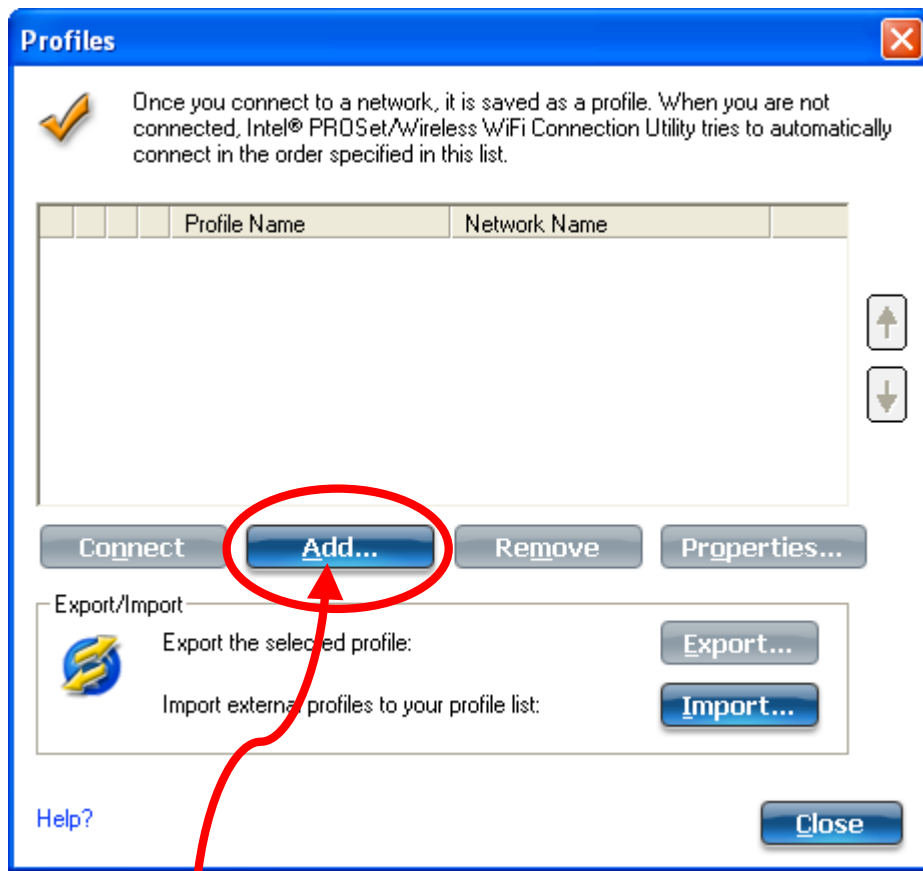
Right click on the Wireless network icon (circled in red) and click **Configure WiFi**

It should open a screen like the one below



Click on **Profiles...**

This will open a screen like:



Click on **Add...**

WiFi Profile Properties - oruprivate

Profile Name: ORU-Employee

General Settings

Profile Name: ORU-Employee

WiFi Network Name (SSID): ORU-Employee

The Profile Name is your name for the network. Example: Home or Office. The WiFi Network Name (SSID) is a unique identifier that differentiates one WiFi network from another.

Operating Mode:

- ☒ Network (Infrastructure) - Connect to WiFi networks and/or the Internet.
- ☐ Device to Device (Ad Hoc) - Connect directly to other computers.

Advanced... Help? << Back Next >> OK Cancel

Click in the "Profile Name:" and put **ORU-Employee**

Do the same for "WiFi Network Name (SSID):"

Then click **Next >>**

WiFi Profile Properties - oruprivate

Profile Name: ORU-Employee

General Settings

Security Settings

PEAP User

PEAP Server

### Security Settings

☐ Personal Security ☒ Enterprise Security

Network Authentication: WPA2 - Enterprise

Data Encryption: AES - CCMP

☒ Enable 802.1X

Authentication Type: PEAP [Cisco Options...](#)

Step 1 of 2: PEAP User

Authentication Protocol: MS-CHAP-V2

User Credentials: Use the following

User Name: cmaldonado

Domain:

Password:

Confirm Password:

Roaming Identity: int\cmaldonado

[Advanced...](#) [Help?](#) << Back **Next >>** OK Cancel

Click on "Enterprise Security"

Set "Network Authentication:" to "WPA2 – Enterprise"

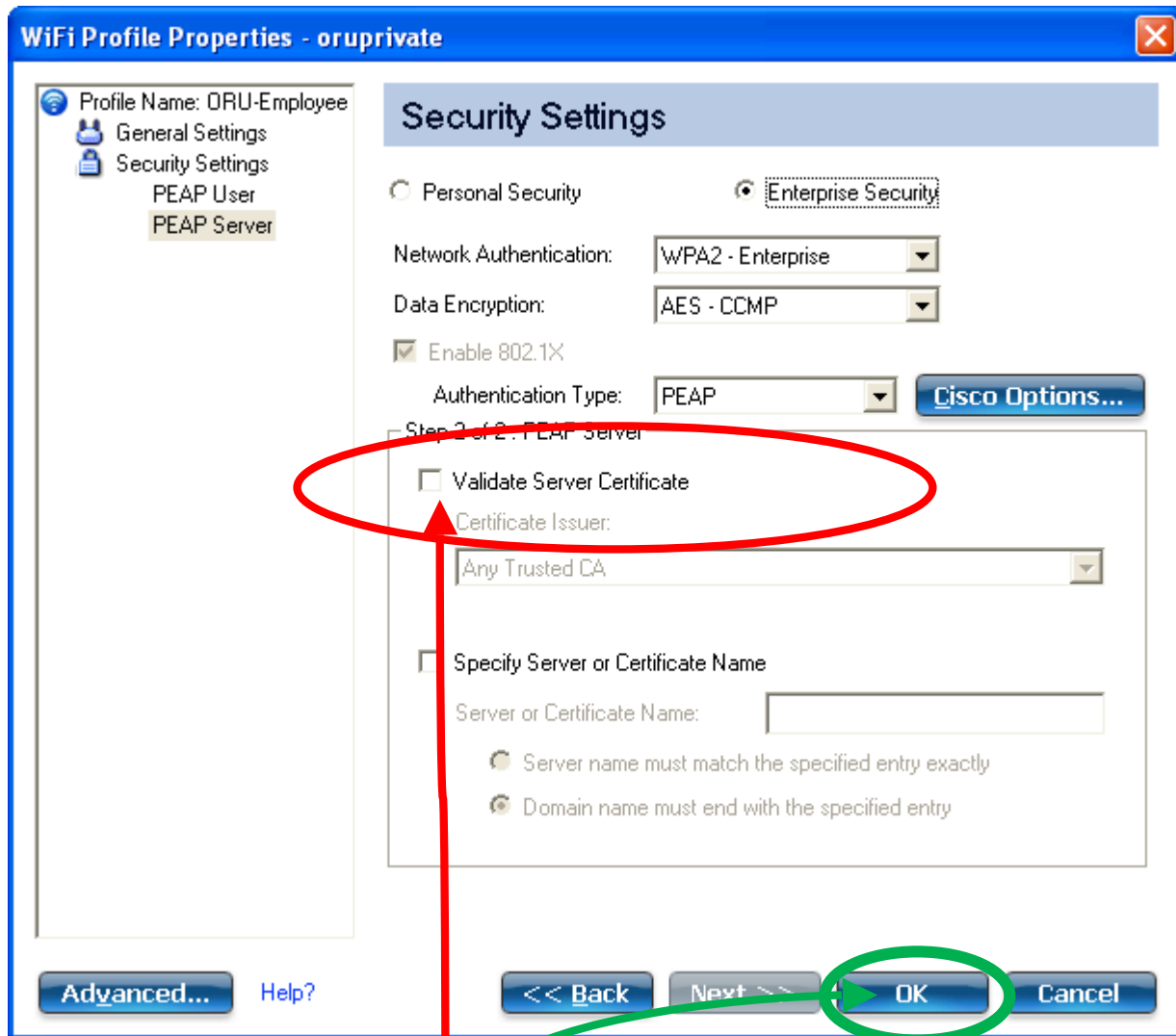
Set "Data Encryption:" to "AES – CCMP"

Put your Network username in "User name:"

Put your Network password in "Password" and "Confirm Password:"

Change "Roaming Identity:" to be int\YOUR\_USERNAME

Then click **Next >>**



Uncheck "Validate Server Certificate"

Click **OK**

You have added the ORU-Employee secure profile, this should show up in your current profile list. Click on it to highlight then click connect. You should then be connected to the ORU wireless