

Configuration Instructions for Windows XP to Connect to the ORU Employee Wireless Network

The purpose of this document is to provide information to assist a user to configure devices to connect to the ORU Employee wireless network. It is not intended to be an exhaustive source of information about configuring settings for wireless networks. It is divided into sections based on OS or device type.

The network names, or SSID's, used in this document are for illustration only and may not be actual names of the network the user is attempting to connect to.

NOTE: This document assumes the desired network is up and the device to be connected is in range.

Windows XP

Open the Wireless Network Connection Properties (Figure 1).



Right click on the computer and click on properties. The next figure should appear on the computer.

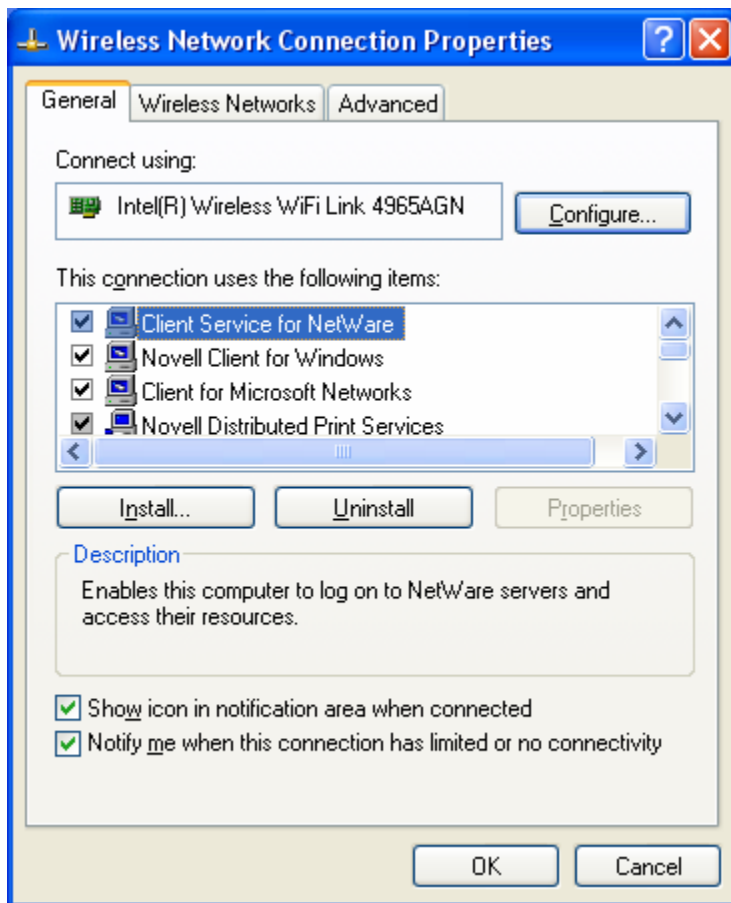


Figure 1

Click the Wireless Networks tab (Figure 2).

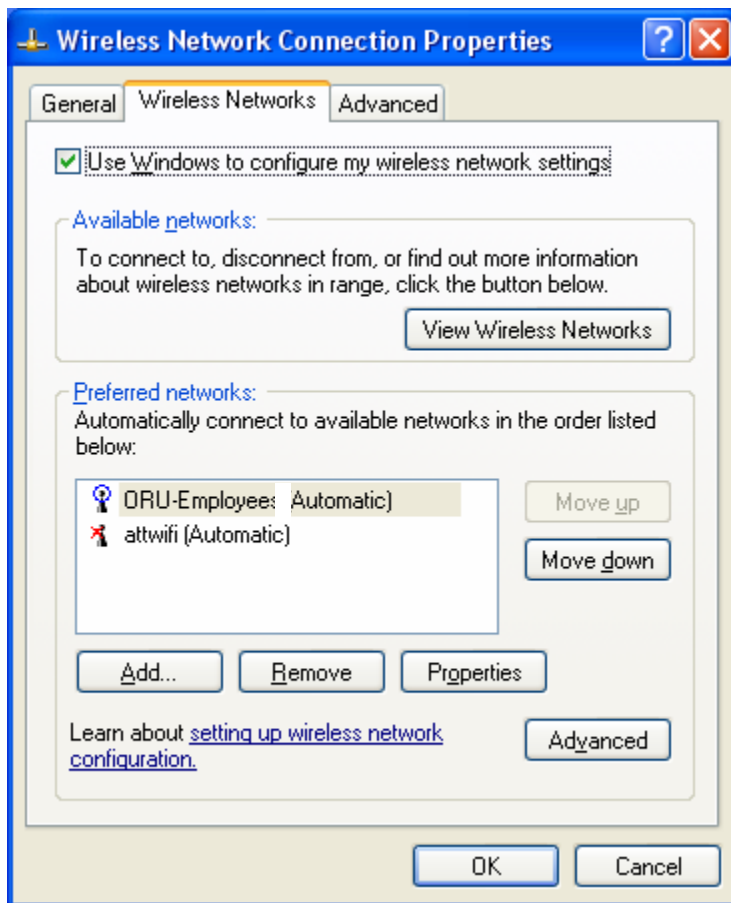


Figure 2

Select the network you wish to connect to and click the Properties button (Figure 3). If the network you wish to connect to is not listed, you may be able to add it by clicking the Add button. If you are unable to add the network you may be out of range or it could be down.

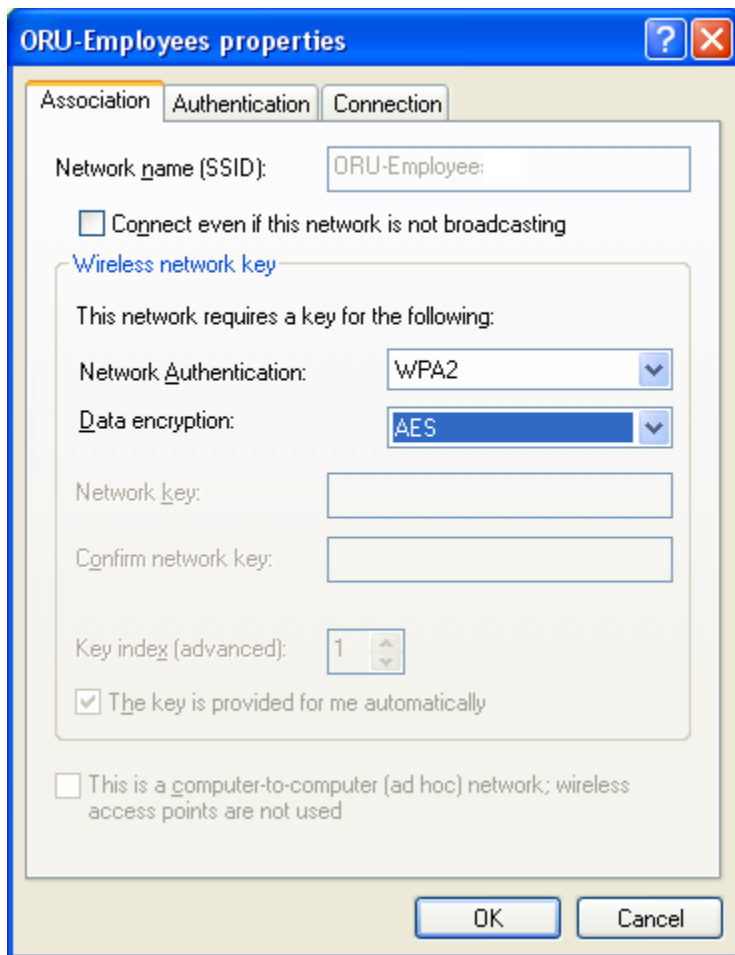


Figure 3

- The Network Authentication drop down choices may vary from device to device. Select a choice from this list which is in order of preference:
 1. WPA2-Enterprise
 2. WPA2
 3. WPA-Enterprise
 4. WPA
- Select AES for Data Encryption.
- Uncheck the "Connect even if this network is not broadcasting" box if it is checked.

Click the Authentication tab (Figure 4).

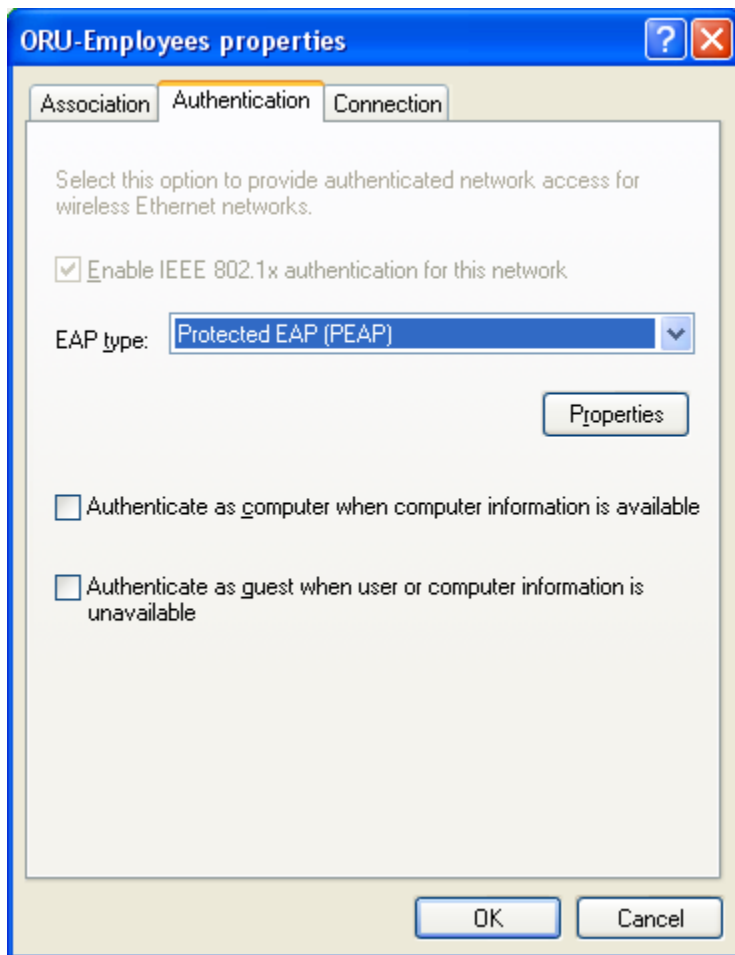


Figure 4

- Select "Protected EAP (PEAP)" from the EAP type dropdown.
- Uncheck the "Authenticate as computer when computer information is available" and "Authenticate as guest when user or computer information is unavailable" check boxes if they are checked.

Click the Properties button (Figure 5).

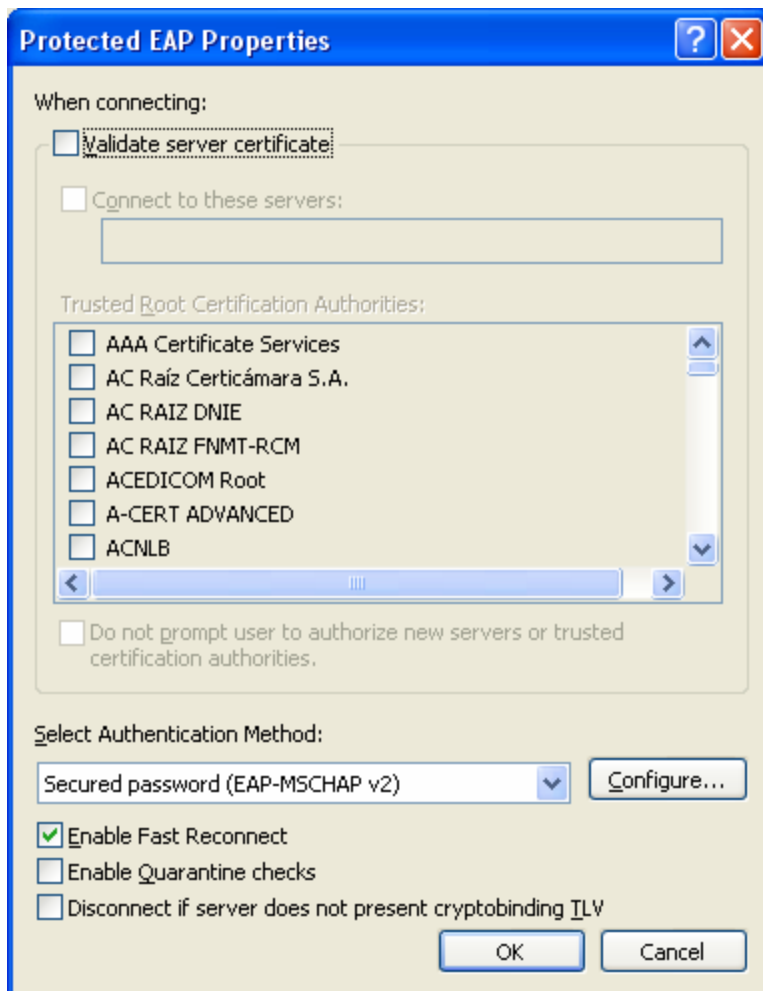


Figure 5

- Uncheck the Validate server certificate checkbox if it is checked.
- Select “Secured password (EAP-MSCHAP v2) from the Select Authentication Method.

Click the Configure button (Figure 6).

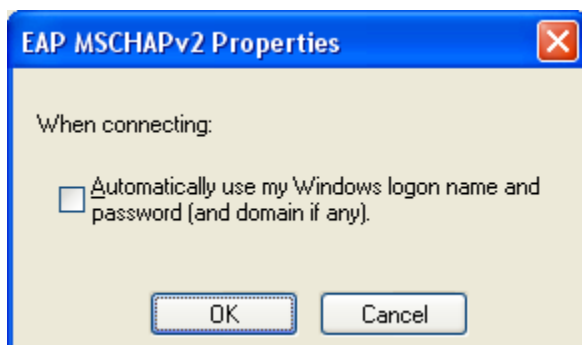


Figure 6

- If your user name and password on the device is the same as your Novell user name and password, you may check the “Automatically use my Windows logon name and password (and domain if any).” checkbox. This setting will enable you to log into the network without entering your user name and password a second time. Otherwise, uncheck the checkbox.

Click the OK button.

Click the OK button on the Protected EAP Properties window.

Click OK on the network Properties window.

Click OK on the Wireless Network Connection Properties window.

At this point the device should be configured so that it is able to connect to the ORU wireless network. You must still establish a connection and log in to obtain network services.

Depending on device configuration, you may be required to manually initiate a connection to the network or the device may automatically attempt to connect. If you see a login window the device is attempting to connect.