

# **ACADEMY FOR EXCEPTIONAL TEACHING & INNOVATION**

**Dr. Even Culp**

**Dr. Kim Boyd**

# ACADEMY FOR EXCEPTIONAL TEACHING & INNOVATION

---

*Psalms 102:18*

*This will be written for the generation to come, that a  
people yet to be created may praise the Lord.*

# ACADEMY FOR EXCEPTIONAL TEACHING & INNOVATION

---

***David Gushee:***

***The fundamental task of the Christian educator is to incarnate an authentically Christian way of life.***

# **ACADEMY FOR EXCEPTIONAL TEACHING & INNOVATION**

---

**Matthew 7:16:**

**You will know them by their fruits.**

- **The Result of Being a Living Witness:**

- An educator of character is a person of integrity.
- Educators of integrity are models for their students
- Students of righteous educators are blessed.
- Students see in righteousness and blameless educators the model of integrity in their school.
- They are encouraged by this godly example of educators who live out their faith and are challenged to become wise themselves.

- **Who's In Your Classroom?**

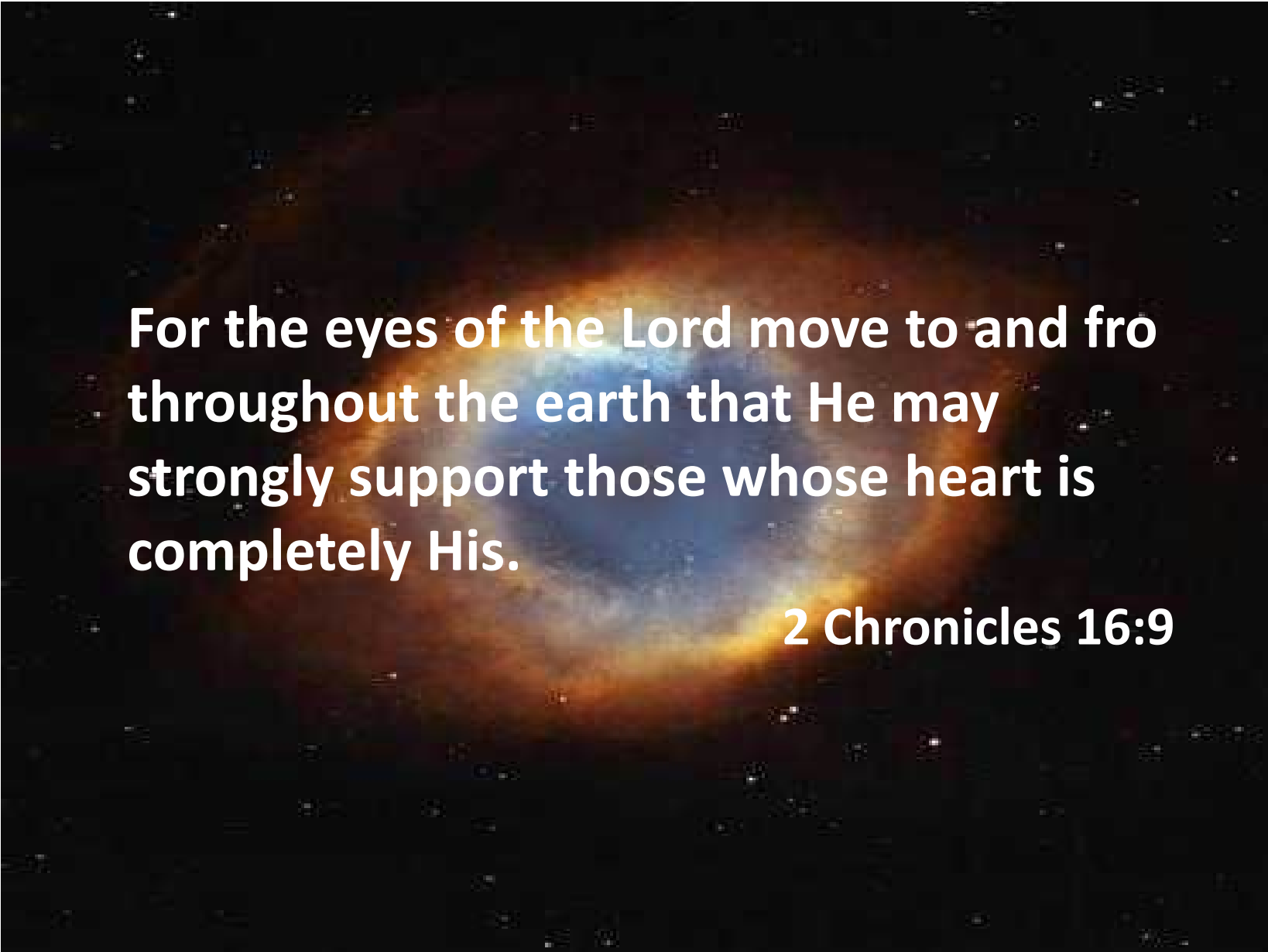
- An educator of character is a person of integrity.
- Educators of integrity are models for their students
- Students of righteous educators are blessed.
- Students see in righteousness and blameless educators the model of integrity in their school.
- They are encouraged by this godly example of educators who live out their faith and are challenged to become wise themselves.



ACADEMY FOR EXCEPTIONAL  
TEACHING & INNOVATION

- **Who's In Your Classroom?**





**For the eyes of the Lord move to and fro  
throughout the earth that He may  
strongly support those whose heart is  
completely His.**

**2 Chronicles 16:9**



- Who's In Your Classroom?



# Relational Virtue: Covenant Fidelity

## Romans 13: 9-10

---

People who take seriously the moral obligations created by their relationships with and commitments to other people.

People who seek to relate responsibly, consistently, and with integrity to ***all*** people.

# 1 Samuel 16:7 (NIV)

But the LORD said to Samuel, “Do not consider his appearance or his height, for I have rejected him. The LORD does not look at the things people look at. People look at the outward appearance, but the LORD looks at the heart.”

- Stewardship



- **Accountability:**

- At the most basic level, accountability obligates someone to explain and justify his or her actions to some other person or group.

- Muffo, J. A. (2003). *Institutional research support of accountability*. The primer for institutional research, 14. (pp. 1-8).

- **Our Relationship with God Should Be As Our Relationship with Our Students:**
- **Proverbs 20:27—“The spirit of man is the lamp of the Lord, searching all the inner depths of his heart”**
- God reveals what is in the depths of a person’s heart (thoughts and attitudes, desires, will) in the same way a lamp reveals what is in the darkness.
- He discerns our motives and evaluates our actions.
- God’s Spirit enables us to know and please God, functioning far beyond the human conscience.
- Just as we may pay attention and evaluate our students’ behavior, God does the same with us.

# **TASK FORCE FOR EXCEPTIONAL TEACHING & INNOVATION**

## **Task Force for Exceptional Teaching Members:**

Kim Boyd, Chair

William Ranahan

Marcia Livingston

Leighanne Locke

William Lyons

Denise Miller

Michael Mathews

Neal Stenzel

Terry Unruh

Rachel Budavich

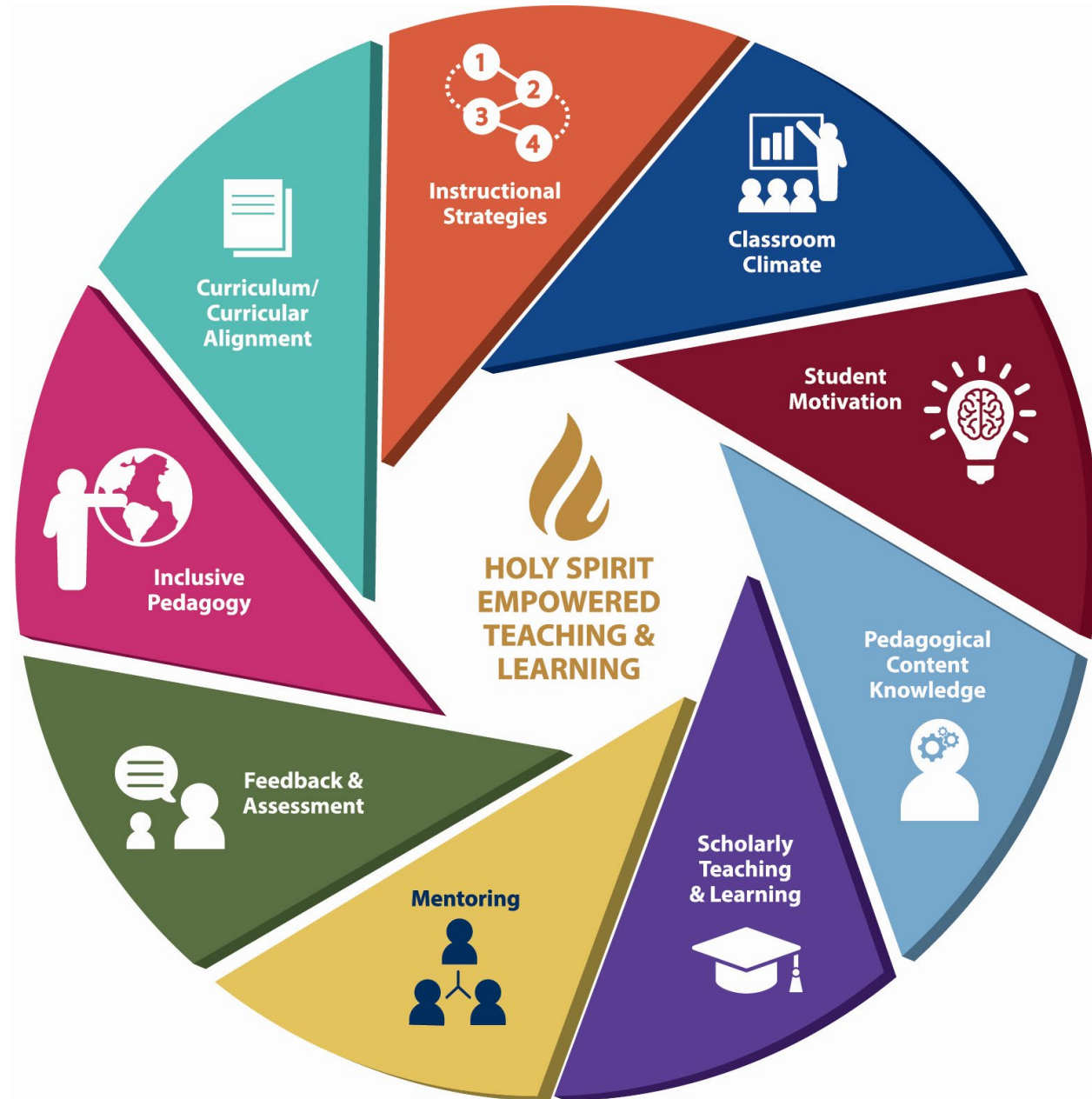
# ORU

ACADEMY FOR EXCEPTIONAL  
TEACHING & INNOVATION

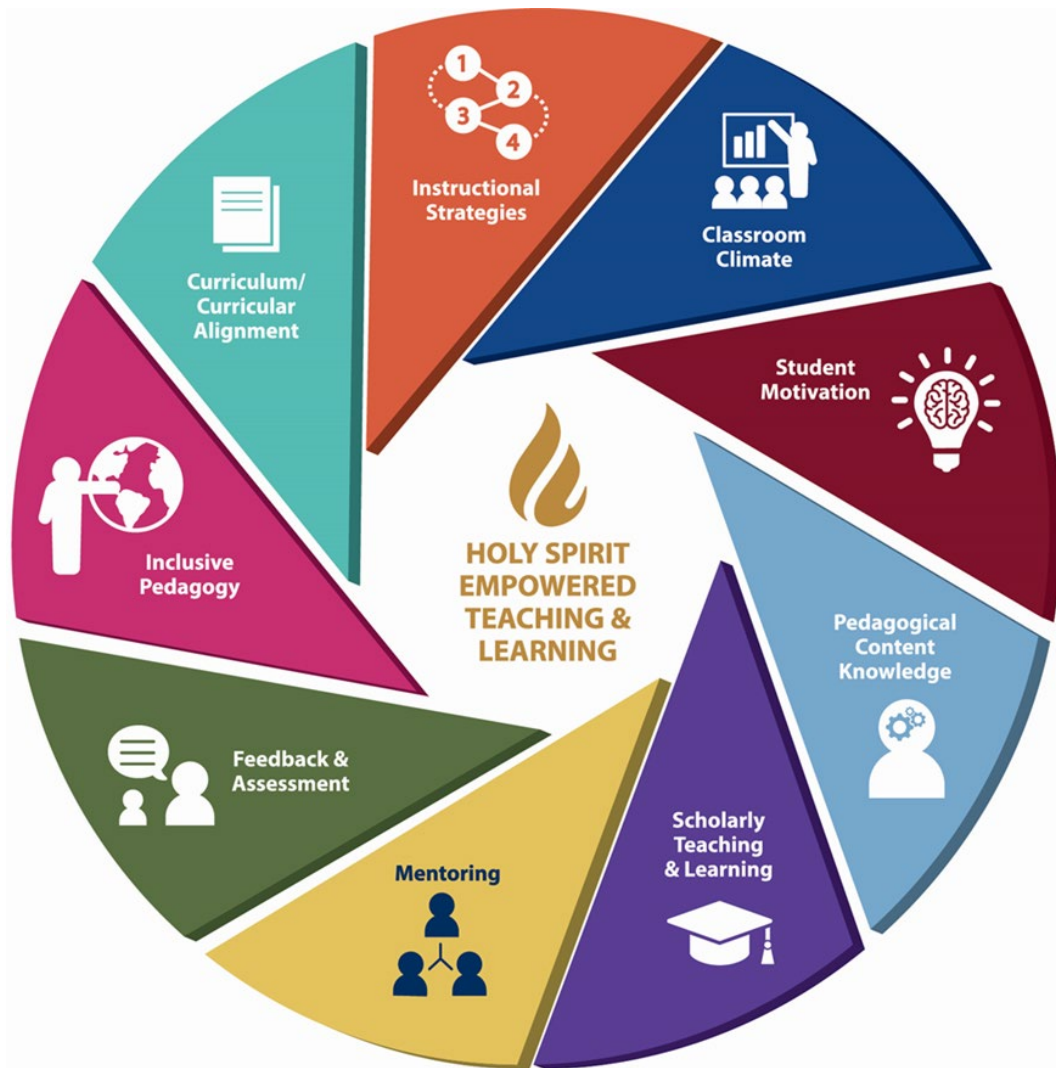
# ORU

ACADEMY FOR EXCEPTIONAL  
TEACHING & INNOVATION





# Developing Whole Leaders for the Whole World



How can exceptional teaching develop whole leaders for the whole world?

